

Hemorrhoids More Conditiontreatment

The swelling of **hemorrhoids** tissue can come without warning. You may only realize too late that you are suffering with **hemorrhoids** condition once the pain and the bleeding have already occurred. Notably, hemorrhoids are the skin tissues that can be found in the anal canal. Extensive pressure towards the blood vessels of these hemorrhoid tissues results in inflammation - hence, the swollen-effect in the vein or the sac-like protrusion inside the anal canal.



Permanently Cure Your Hemorrhoid Simply Click Here

Common Hemorrhoids Symptoms.

One Particular Hemorrhoids Symptom is Bleeding

Unusual bleeding from the anal canal can be sign of hemorrhoids. Blood loss can be detected during **bowel** movements as can be seen at the stool or perhaps in the toilet paper being used for washing after defecation. Bleeding might be a result of a ruptured hemorrhoid during bowel movement. Meanwhile, unexplained bleeding should be reported immediately in order to a doctor since this could be another symptom for a higher and more complicated illnesses such as gastrointestinal problems, rectal polyps, and colorectal cancer.

Another Major Symptom of Hemorrhoids is Pain in the Rectum or Even Rectal Area

Pain is usually accompanied with bleeding. Uncommon pain is very evident amongst **external hemorrhoids** because it is the one that is probably being more exposed to outside disturbances for example accidental details and uncomfortable clothing.

“



External Hemorrhoids Treatment - How to treat External Hemorrhoids Hemorrhoids are varicose veins and swollen tissues in the anus and anal sphincter. They may cause itching, burning and can bleed. Hemorrhoids can be treated easily and in some cases, prevented altogether. Hemorrhoids become worse over the years, so...

One frequent hemorrhoids symptom is the sudden existence of a sac-like protrusion in the anus. Any tissue that protrudes from the anus and does not disappear for longer times is something that should be given interest. This sac-like protrusion could be a manifestation of an external hemorrhoid, or it can also be an inside hemorrhoid that protrudes until the outer lining of the anal canal.

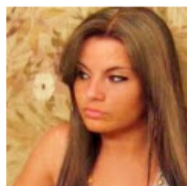


HemorrhoidsHemorrhoidBowelExternal HemorrhoidsExternal

Success Stories:Click Here

Itchiness in the rectal area or even in the rectum is also another form of a hemorrhoids symptom. The uncontrollable itches feeling and burning sensation in the anal sphincter due to other reason than pinworms can be attributed to the existence of hemorrhoids. An individual should avoid above do away with his or her anus in cases like this in order to avoid further irritation that might eventually cause pain.

- Chronic abdominal illness like diarrhea and constipation without any known cause is another sign of hemorrhoids.
- Uncontrolled abdominal bloating can also serve as another sign.
- Early stages of signs such as this ought to be referred right away to a health care provider in order that proper medical care will be provided.



“ **Jennifer T. Rader**

Jennifer is a writer at uturine.info, a resource on health tips. Last year, Jennifer worked as a blog curator at a high tech company. When she's not reading web content, Jennifer loves working out and fishing.

Disclaimer: Content in this document is an advertisement, therefore it may be biased and should not be considered an objective or independent review. Owner of this document may be compensated when you purchase a product by clicking a link in this document. The views and opinions expressed in this document are purely of the author. Any product claim or other representation about a product or service should be verified with the manufacturer, provider or party in question. Any health information in this document is for educational purposes only and is not intended to replace the advice of your health care provider.